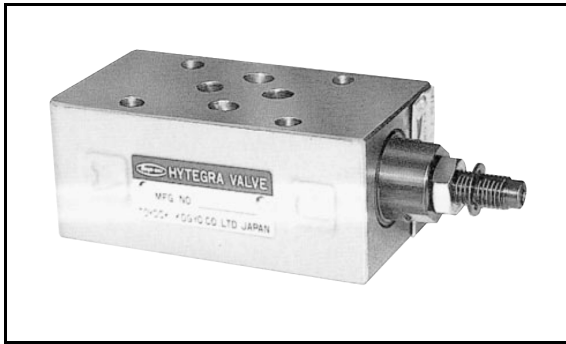


## DUAL-FUNCTION VALVE (H\*\*3H) SIZE 025 / 03



### SPECIFICATIONS

#### ● Size 025

Model	Symbol	Max. Operating Pressure (MPa)	Flow Adjustment Range (L/min)	Cracking Pressure (MPa)	Pressure Adjustment Range (MPa)
HKF3H-P-Q*-40-025B		25	0.5 to 40	* symbol 1: 0.04 2: 0.35 3: 0.46	—
HFG3H-P-40-D*-025B				—	* symbol 4: 0.7 to 7 5: 3.5 to 14
HKF3H-W-Y*-40K-025B				* symbol 1: 0.04 2: 0.35	—
HKF3H-PW-Q*-40K-025B				* symbol 1: 0.04 2: 0.35 3: 0.46	—

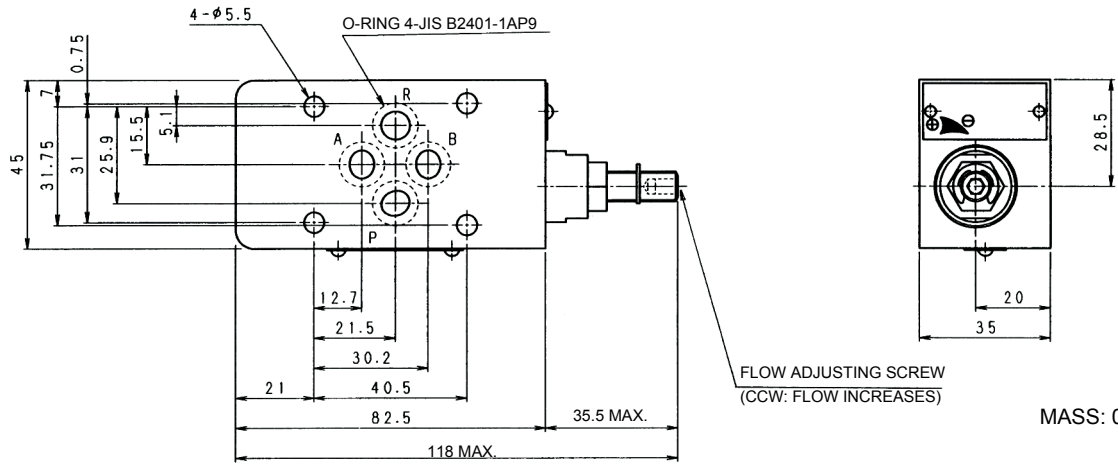
#### ● Size 03

Model	Symbol	Max. Operating Pressure (MPa)	Flow Adjustment Range (L/min)	Cracking Pressure (MPa)	Pressure Adjustment Range (MPa)
HKF3H-P-Q*-80-03		21	0.5 to 80	* symbol 1: 0.04 2: 0.35 3: 0.46	—
HKF3H-P-Q*-K56-03			Max. controllable flow 56		—
HKG3H-P-Q*-B*-03			0.5 to 80	—	* symbol 1: 0.7 to 7 2: 3.5 to 14 3: 10.5 to 21
HFG3H-P-80-B*-03				—	—
HKF3H-W-Y*-80K-03			* symbol 1: 0.04 2: 0.35	—	
HK3H-PW-Q*-80K-03			* symbol 1: 0.04 2: 0.35 3: 0.46	—	
HGF3H-AW-B*-80K-03			—	* symbol 1: 0.7 to 7 2: 3.5 to 14 3: 10.5 to 21	
HGF3H-BW-B*-80K-03			—		

# EXTERNAL DIMENSIONS

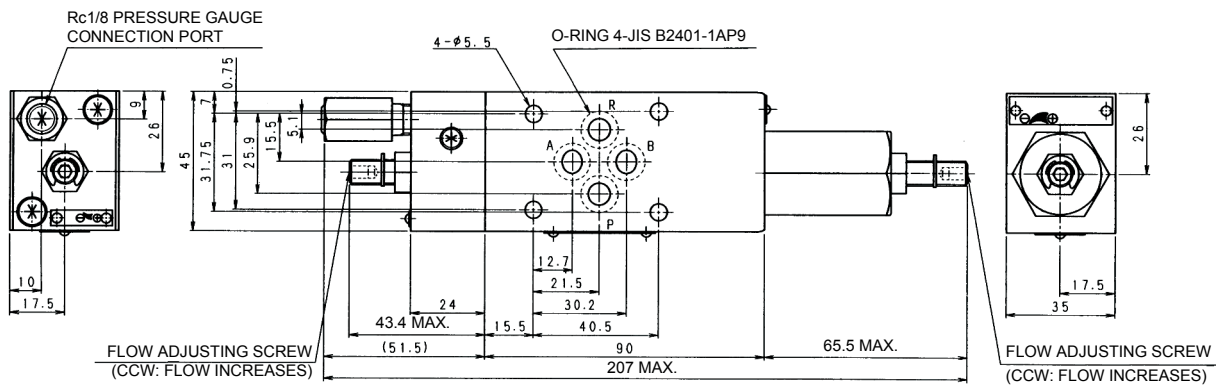
● Size 025

● HKF3H-P-Q\*-40-025B



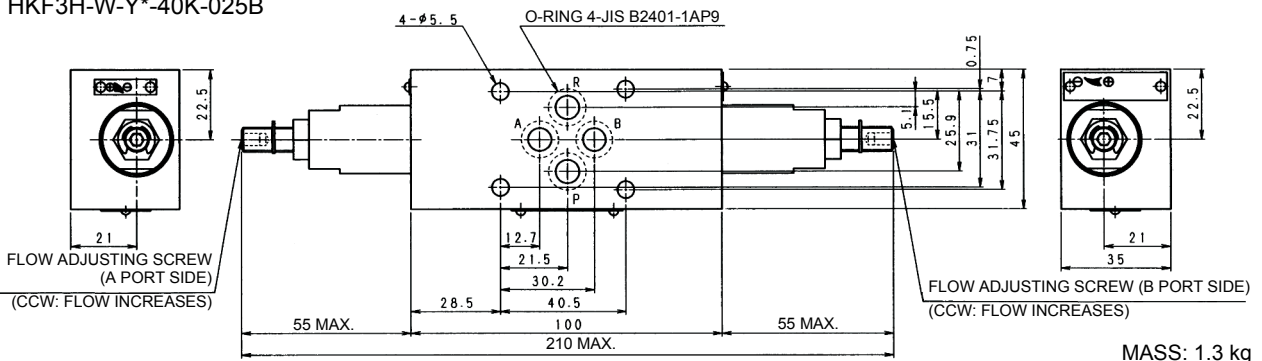
MASS: 0.9 kg

● HFG3H-P-40-D\*-025B



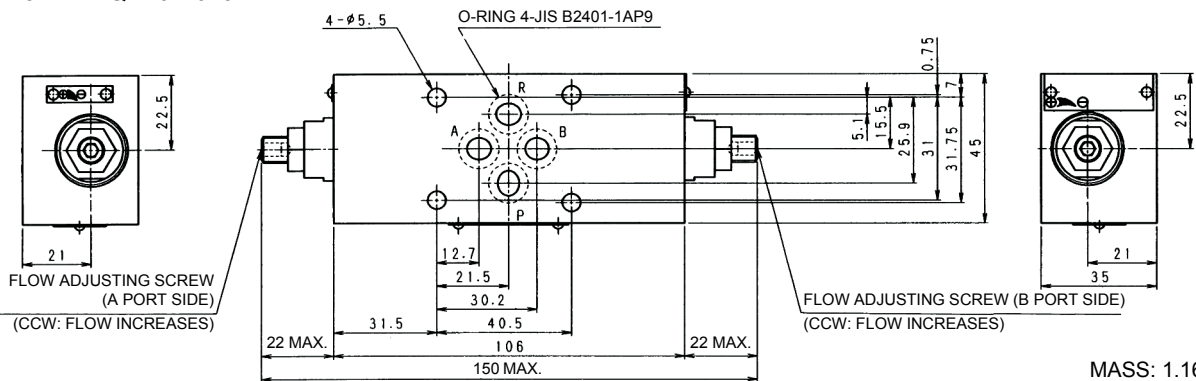
MASS: 1.36 kg

● HKF3H-W-Y\*-40K-025B



MASS: 1.3 kg

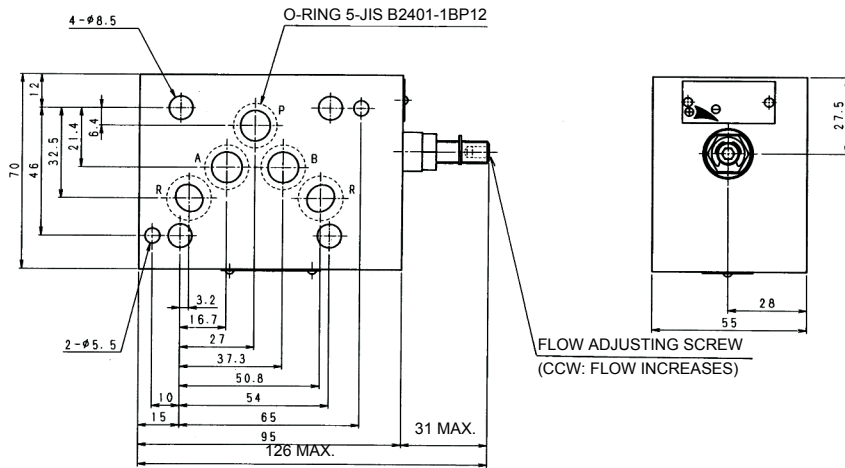
● HKF3H-PW-Q\*-40K-025B



MASS: 1.16 kg

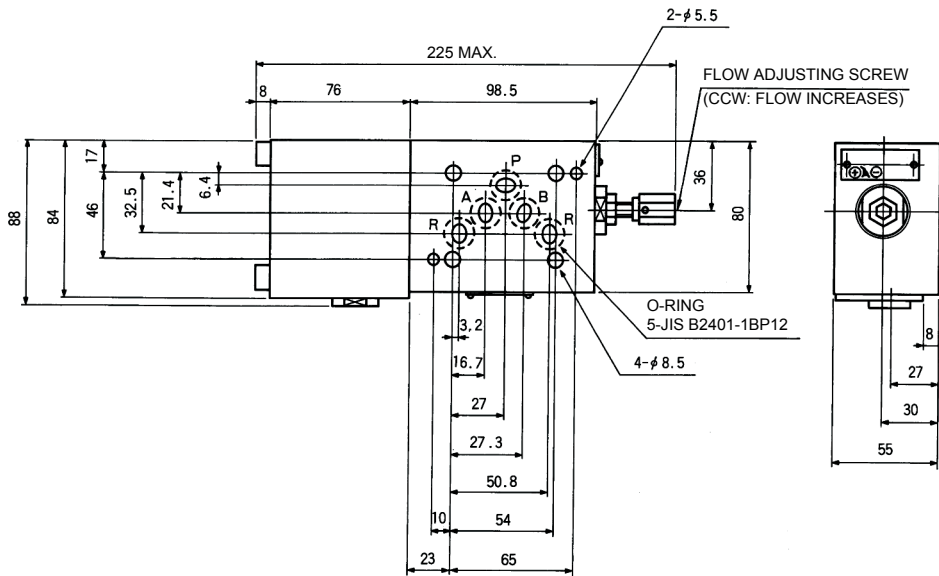
● Size 03

● HKF3H-P-Q\*-80-03

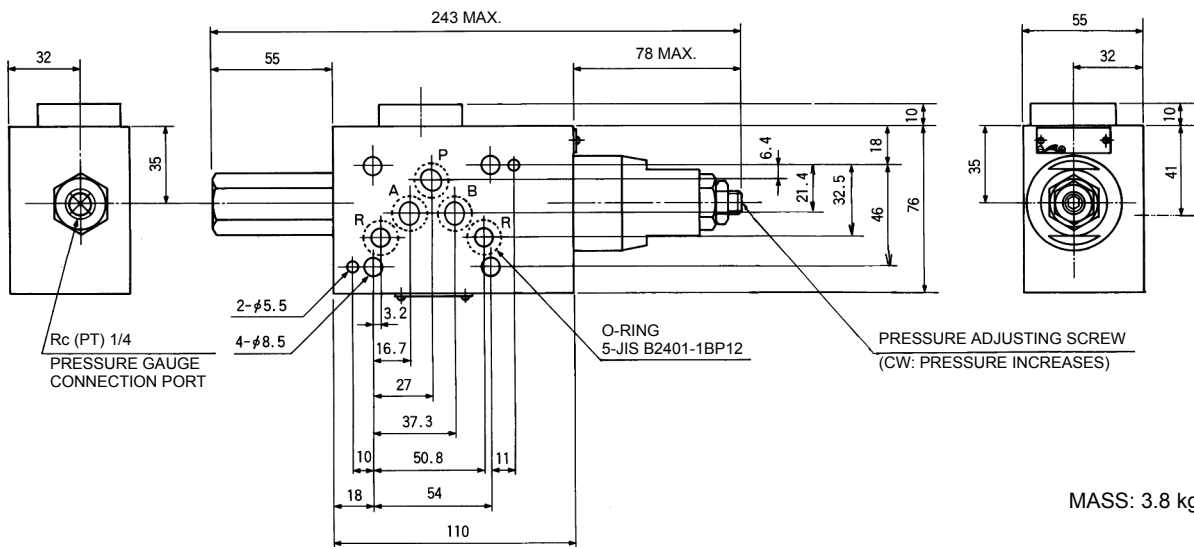


MASS: 2.5 kg

● HKF3H-P-Q\*-K56-03

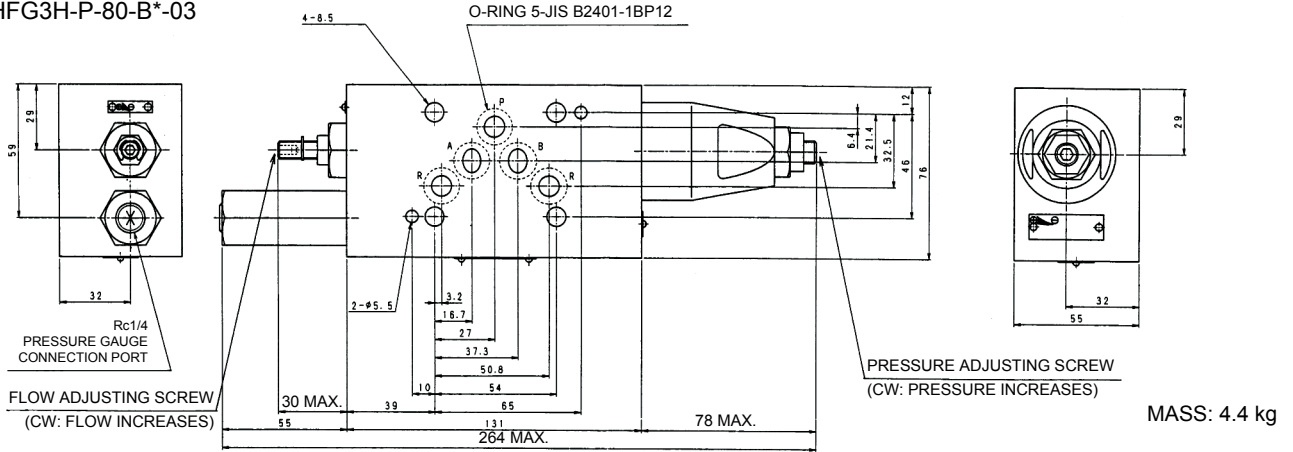


● HKG3H-P-Q\*-B\*-03



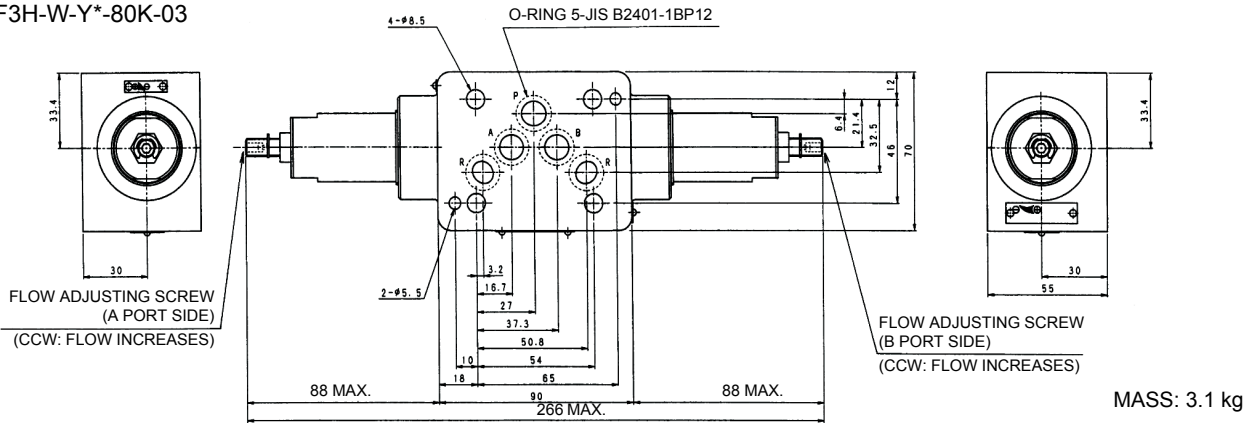
MASS: 3.8 kg

● HFG3H-P-80-B\*-03



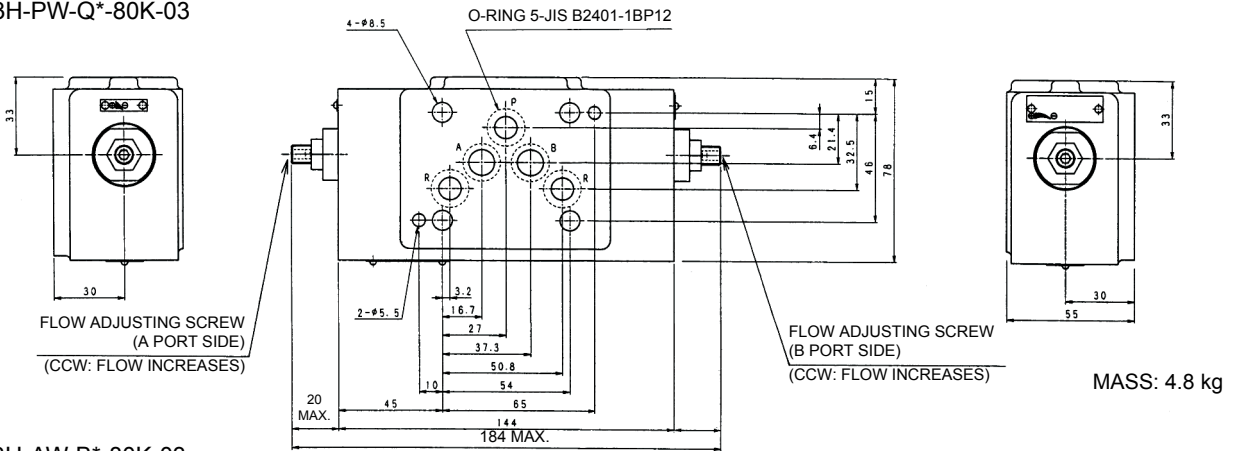
MASS: 4.4 kg

● HKF3H-W-Y\*-80K-03



MASS: 3.1 kg

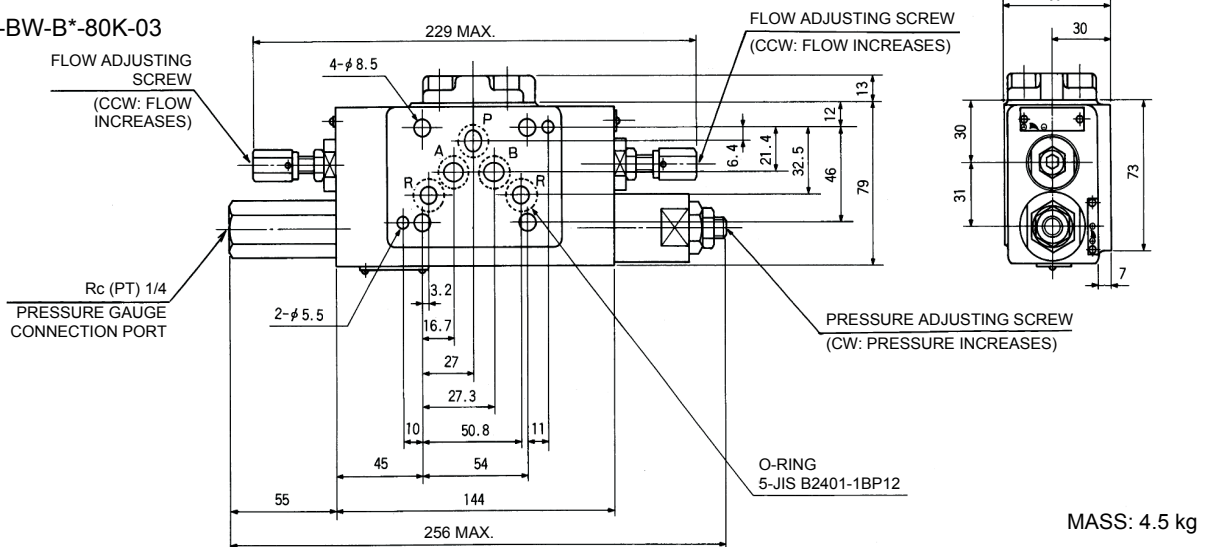
● HKF3H-PW-Q\*-80K-03



MASS: 4.8 kg

● HGF3H-AW-B\*-80K-03

● HGF3H-BW-B\*-80K-03



MASS: 4.5 kg