

POWER PACKAGE (FOR AC)



FEATURES

The power package for AC provides the same features as the power package for DC.

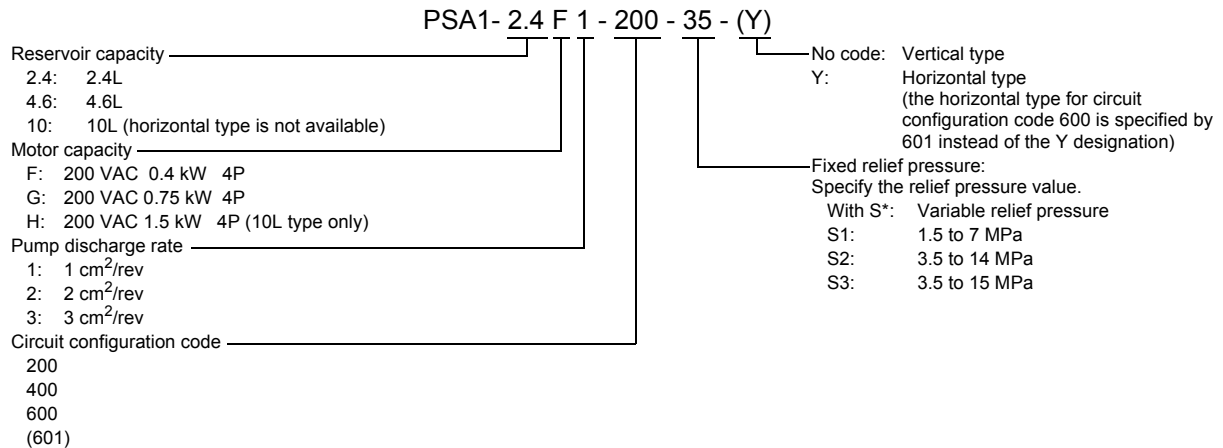
- Avoid continuous operation since the reservoir capacity is small.
- The direction of motor rotation is CCW, viewing from the cover side. Cables must be connected carefully.
- Operate the unit with the specified amount of hydraulic fluid and within a temperature range of 10 to 60°C.
- The fluid to be used is ISO VG32 when the operating pressure is lower than 7 MPa and ISO VG46 petroleum-base fluid when the operating pressure is 7 MPa or higher.
- The relief setting pressure must be lower than the maximum operating pressure.
- The contamination level of the hydraulic fluid must be better than Class 12.

SPECIFICATIONS

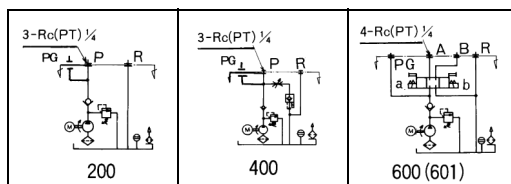
Circuit Configuration Code	Motor	Model	Max. Operating Pressure (MPa)	Discharge Rate in No-load State (L/min)	
				50 Hz	60 Hz
200	200 VAC 0.4 kW	PSA1-*F1-*00	14	1.4	1.7
		PSA1-*F2-*00	7	2.8	3.4
		PSA1-*F3-*00	4	4.2	5.1
	200 VAC 0.75 kW	PSA1-*G2-*00	14	2.8	3.4
		PSA1-*G3-*00	9	4.2	5.1
	200 VAC 1.5 kW	PSA1-10H*-*00	15	1.4	1.7
		PSA1-10H*-*00		2.8	3.7
		PSA1-10H*-*00		4.2	5.1

NOTE: The 200 VAC, 1.5 kW specification motor is not available for circuit configuration code 400.

MODEL DESIGNATION



● CIRCUIT CONFIGURATION



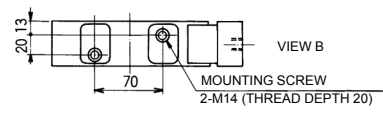
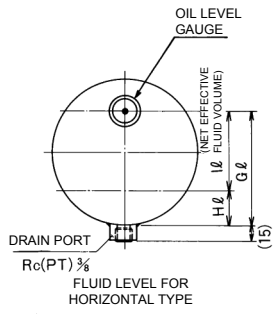
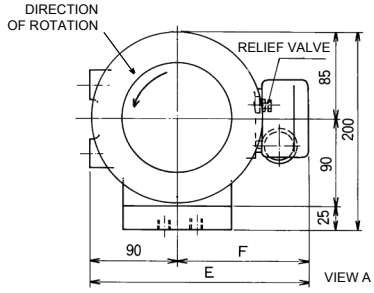
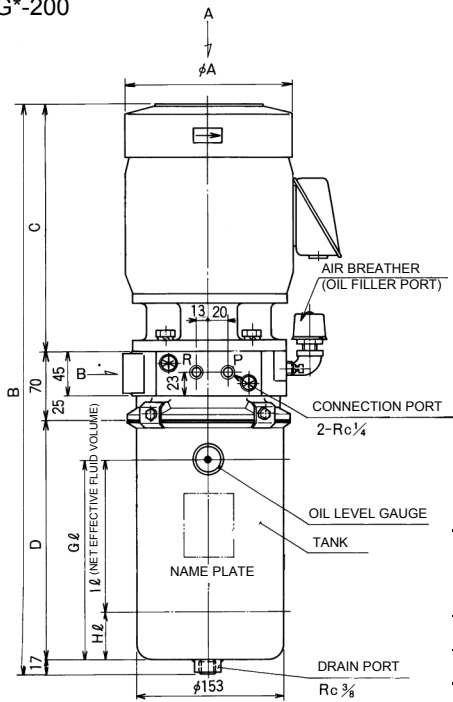
NOTE 1: Specify the model name (including voltage) of the solenoid valve to be used in the hydraulic circuit with configuration code 600. If no specification is given, HD3-3W-BCA-025A-WYA1 is installed.

NOTE 2: If a pressure gauge (for measuring the relief pressure) is to be installed, please specify this.

NOTE 3: The valve used in the hydraulic circuit with configuration code 400 is HK2-SGOD-03A (100 VAC).

EXTERNAL DIMENSIONS

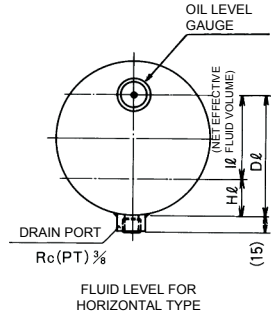
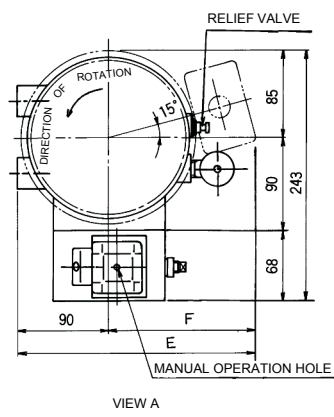
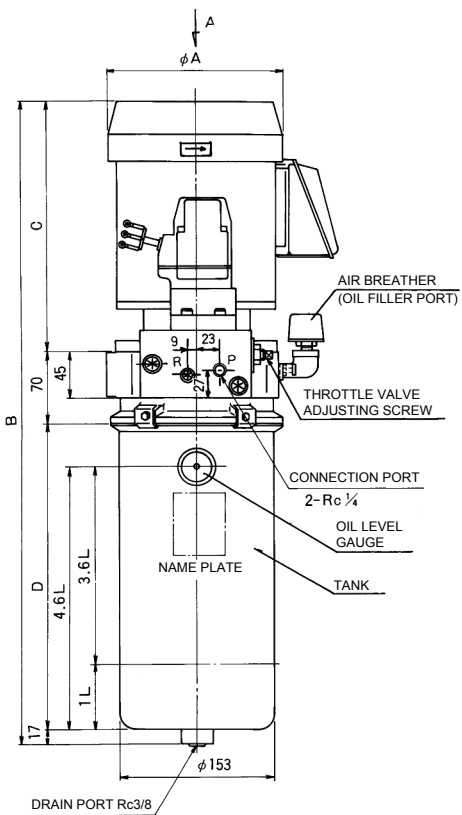
- PSA1-2.4F*-200
- PSA1-2.4G*-200



Unit: mm

Model	Symbol									Mass (kg) (fluid included)
	A	B	C	D	E	F	G	H	I	
PSA1-2.4F*-200	150	498	231	180	225	135	2.4	1.0	1.4	21
PSA1-2.4G*-200	170	510	243	180	235	145	2.4	1.0	1.4	24.5

- PSA1-2.4F*-400
- PSA1-4.6G*-400

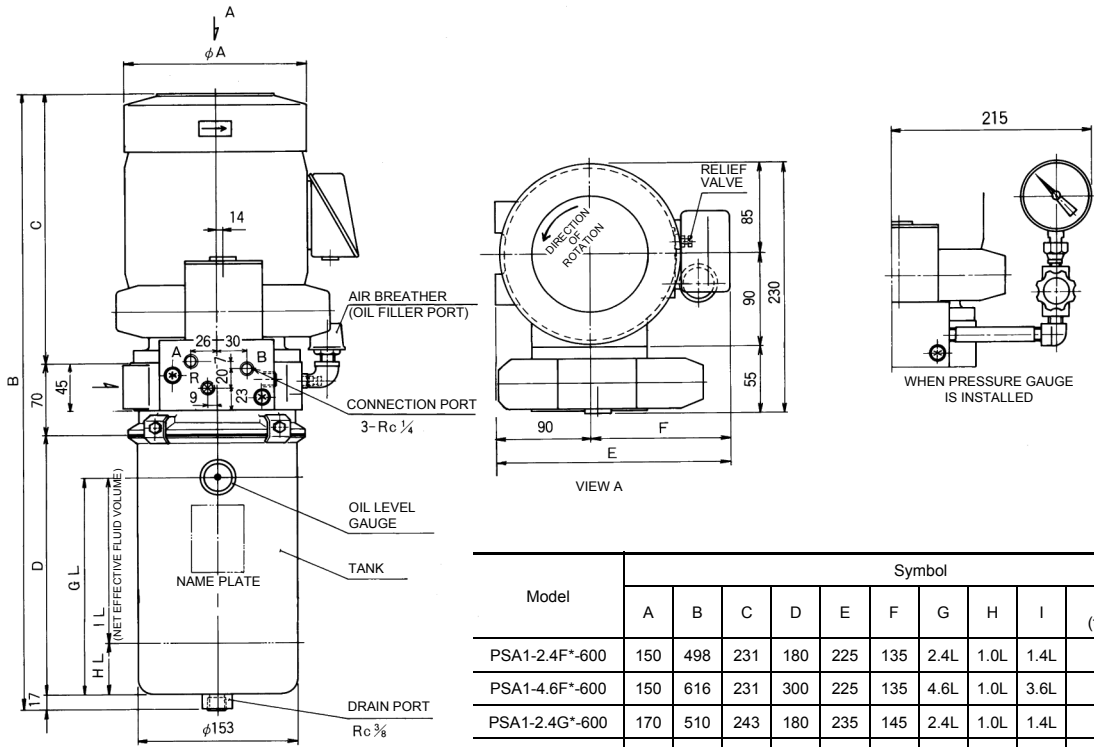


Unit: mm

Model	Symbol									Mass (kg) (fluid included)
	A	B	C	D	E	F	G	H	I	
PSA1-2.4F*-400	150	498	231	180	225	135	2.4L	1.0L	1.4L	25.5
PSA1-4.6F*-400	150	618	231	300	225	135	4.6L	1.0L	3.6L	28.0
PSA1-2.4F*-400	170	510	243	180	235	145	2.4L	1.0L	1.4L	29.0
PSA1-4.6G*-400	170	630	243	300	235	145	4.6L	1.0L	3.6L	31.5

EXTERNAL DIMENSIONS

- PSA1-2.4F*-600
- PSA1-4.6G*-600



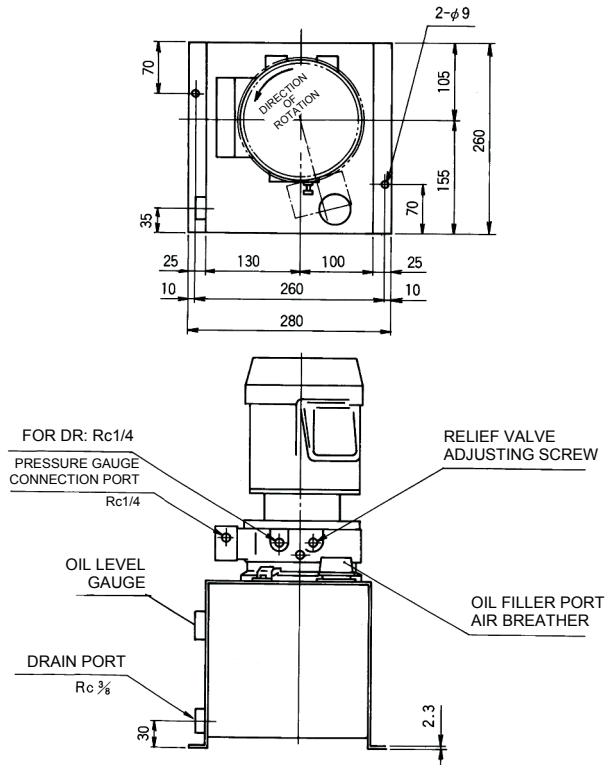
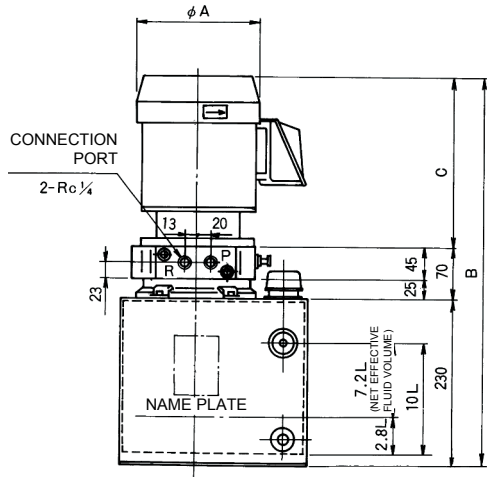
Unit: mm

Model	Symbol									Mass (kg) (fluid included)
	A	B	C	D	E	F	G	H	I	
PSA1-2.4F*-600	150	498	231	180	225	135	2.4L	1.0L	1.4L	24.5
PSA1-4.6F*-600	150	616	231	300	225	135	4.6L	1.0L	3.6L	27.0
PSA1-2.4G*-600	170	510	243	180	235	145	2.4L	1.0L	1.4L	28.0
PSA1-4.6G*-600	170	630	243	300	235	145	4.6L	1.0L	3.6L	30.5

NOTE: SOLENOID VALVE SHOWN IN THE EXTERNAL DIMENSIONS DRAWING IS A PREVIOUS TYPE.

EXTERNAL DIMENSIONS

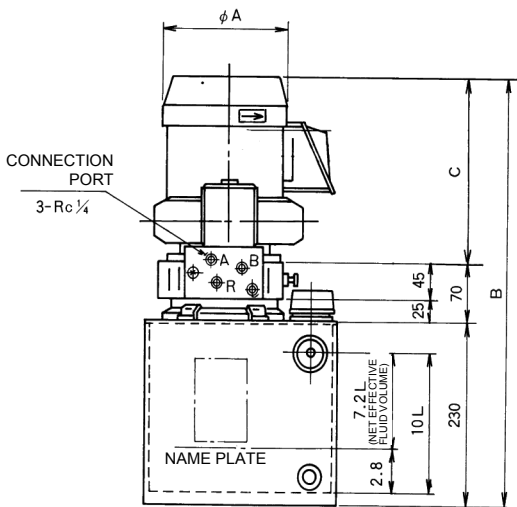
- PSA1-10F*-200
- PSA1-10G*-200
- PSA1-10H*-200



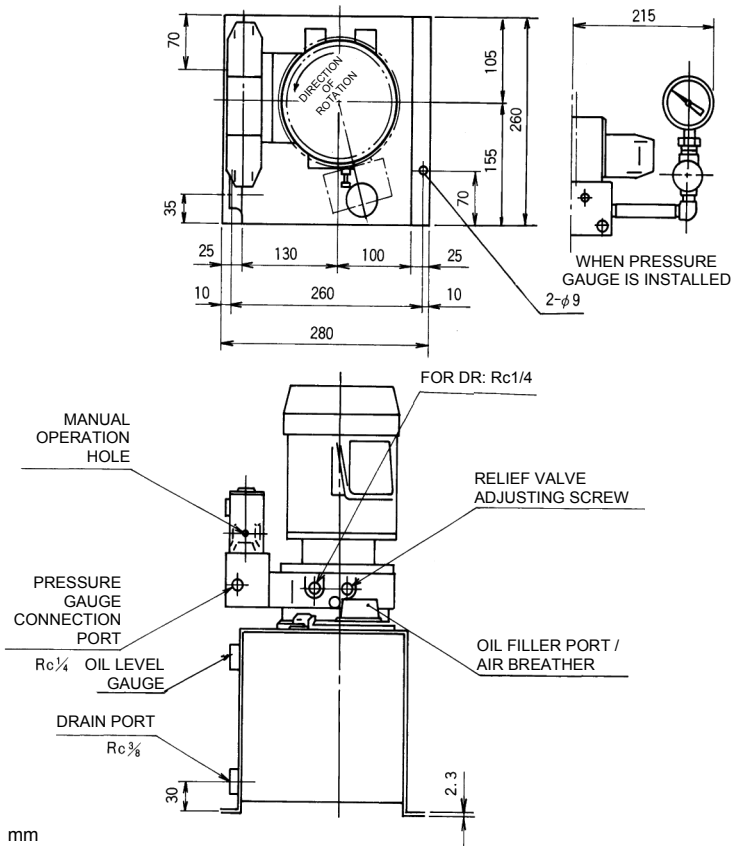
Unit: mm

Model	Symbol			Mass (kg) (fluid included)
	A	B	C	
PSA1-10F*-200	150	531	231	32.5
PSA1-10G*-200	170	543	243	36.5
PSA1-10H*-200	202	587	287	49.0

- PSA1-10F*-600
- PSA1-10G*-600
- PSA1-10H*-600



Unit: mm



Model	Symbol			Mass (kg) (fluid included)
	A	B	C	
PSA1-10F*-600	150	531	231	37.0
PSA1-10G*-600	170	543	243	40.0
PSA1-10H*-600	202	587	287	53.0

NOTE: SOLENOID VALVE SHOWN IN THE EXTERNAL DIMENSIONS DRAWING IS A PREVIOUS TYPE.