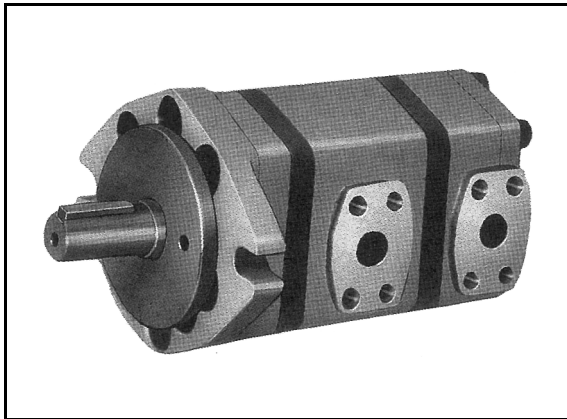


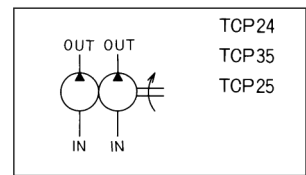
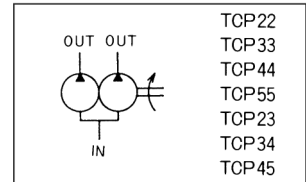
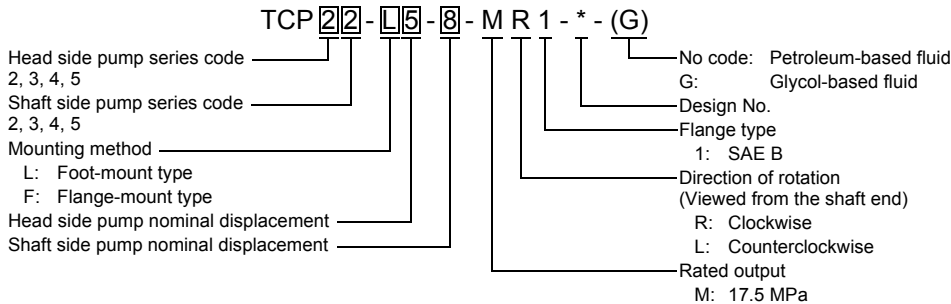
INTERNAL GEAR PUMP (DOUBLE-PUMP TCP** SERIES)



Two single pump units are assembled into one unit and driven by the common shaft. The fluid pumped from the two pumps can be delivered to separate circuits to drive individual actuators or can be merged to drive a single actuator.

- The standard direction of rotation is clockwise, viewed from the shaft end. If counterclockwise rotation is required, specify ML1 instead of MR1. The pump that rotates in the counterclockwise direction has the inlet and outlet ports at the opposite positions when compared with the pump that rotates in the clockwise direction.
- It is not possible to change the direction of rotation.
- The mount type can be changed from the flange-mount type to the foot-mount type by attaching the foot.
- When water-glycol fluid is used, specify "G" at the end of model designation. In this case, the maximum speed is $1,200 \text{ min}^{-1}$. Please consult us about the applicable brand of water-glycol fluid.
- A double-pump with counterclockwise rotation can be manufactured only for the following types: TCP24, TCP25 and TCP35.
- The pump can be used for R&O type and abrasion-resistant type hydraulic fluid applications.
- The permissible operating ambient temperature range is from 0 to 60°C .
- When connecting a shaft, use a flexible coupling and connection must be made to that radial and thrust load are not exerted to the pump shaft. Do not apply shock to the pump shaft by tapping the shaft end when mounting/removing a coupling or a pump. Inadequate shock will cause seizure of pump and short pump life. Never drive the pump shaft using a belt.

MODEL DESIGNATION



SPECIFICATIONS

| Model | Pump Input (kW) | | Nominal Displacement | | Pressure (MPa) | | Speed (min^{-1}) | | |
|-------------------------------|--------------------------|--------------------------|----------------------|-------------------|----------------|------|-----------------------------|-------|------|
| | $1,200 \text{ min}^{-1}$ | $1,800 \text{ min}^{-1}$ | Min. | Max. | Rating | Max. | Rating | Max. | Min. |
| TCP22- _F ***-MR1-A | 6 | 9 | $\frac{5}{5}$ | $\frac{10}{10}$ | 17.5 | 21 | 1,800 | 3,000 | 800 |
| TCP33- _F ***-MR1 | 15 | 23 | $\frac{12.5}{12.5}$ | $\frac{25}{25}$ | | | | | |
| TCP44- _F ***-MR1 | 38 | 57 | $\frac{31.5}{31.5}$ | $\frac{50}{50}$ | | | | | |
| TCP55- _F ***-MR1 | 75 | 113 | $\frac{63}{63}$ | $\frac{125}{125}$ | | | | 2,200 | 600 |
| TCP23- _F ***-MR1 | 15 | 23 | $\frac{5}{12.5}$ | $\frac{10}{25}$ | | | | | |
| TCP34- _F ***-MR1 | 38 | 57 | $\frac{12.5}{31.5}$ | $\frac{25}{50}$ | | | | | |
| TCP45- _F ***-MR1 | 75 | 113 | $\frac{31.5}{63}$ | $\frac{50}{125}$ | | | | | |
| TCP24- _F ***-MR1-A | 38 | 57 | $\frac{5}{31.5}$ | $\frac{10}{50}$ | | | | 2,400 | 800 |
| TCP35- _F ***-MR1-A | 75 | 113 | $\frac{12.5}{63}$ | $\frac{25}{125}$ | | | | | |
| TCP25- _F ***-MR1-A | 75 | 113 | $\frac{5}{63}$ | $\frac{10}{125}$ | | | | | |

NOTE 1: The symbol "*" in the model designation indicates the nominal displacement and pumps are arranged so that the pump with the larger capacity is installed at the shaft side.

NOTE 2: Nominal displacement values in the specification table (Max. and Min. columns): The upper row indicates the value of the head side pump and the lower row indicates the value of the shaft side pump.

NOTE 3: The maximum speed varies depending on the combination of the nominal displacement. For details, refer to the Max. Speed column in the Dimension Table.

NOTE 4: For the performance of the individual pump, refer to the performance of the relevant single pump on page 29.

NOTE 5: Use the pump within the values indicated above.

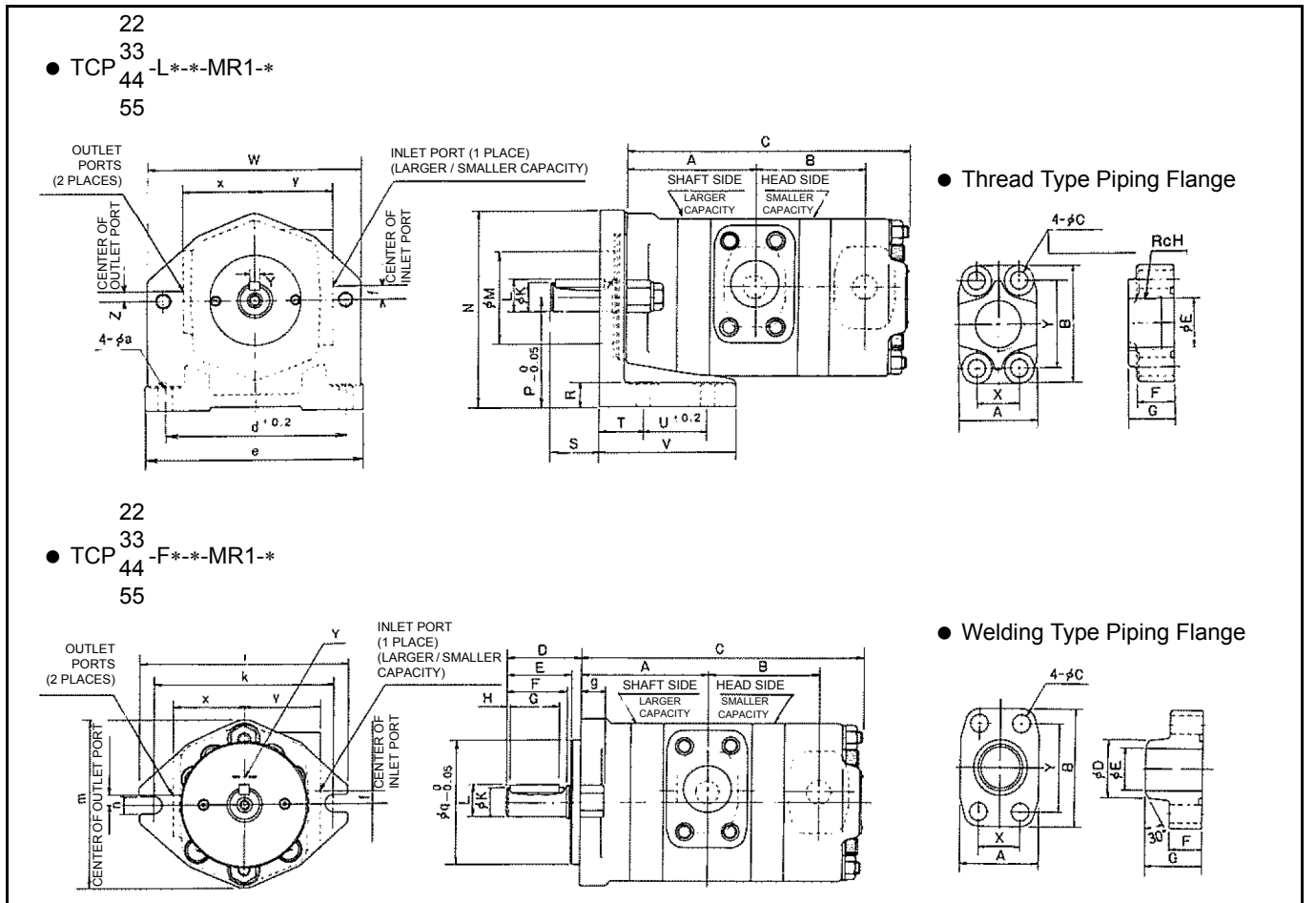
PIPING FLANGE

Specify the flange separately by selecting one from the following table.

| Name | | | For TCP22 | For TCP33 | For TCP44 | For TCP55 | For TCP23 | For TCP34 | For TCP45 | For TCP24 | For TCP35 | For TCP25 |
|------|------------------|----------|-----------|-----------|-----------|-----------|------------------------|------------------------|------------------------|------------------------|------------------------|------------------------|
| Type | For Thread Type | OUT side | FTCP-04PT | FTCP-06PT | FTCP-08PT | FTCP-12PT | FTCP-04PT FTCP-06PT | FTCP-06PT FTCP-08PT | FTCP-08PT FTCP-12PT | FTCP-04PT FTCP-08PT | FTCP-06PT FTCP-12PT | FTCP-04PT FTCP-12PT |
| | | IN side | FTCP-08PT | FTCP-12PT | FTCP-16PT | FTCP-24PT | FTCP-12PT | FTCP-16PT | FTCP-24PT | FTCP-06PT FTCP-12PT | FTCP-08PT FTCP-16PT | FTCP-06PT FTCP-16PT |
| | For Welding Type | OUT side | FTCP-04WE | FTCP-06WE | FTCP-08WE | FTCP-12WE | FTCP-04WE FTCP-06WE | FTCP-06WE FTCP-08WE | FTCP-08WE FTCP-12WE | FTCP-04WE FTCP-08WE | FTCP-06WE FTCP-12WE | FTCP-04WE FTCP-12WE |
| | | IN side | FTCP-08WE | FTCP-12WE | FTCP-16WE | FTCP-24WE | FTCP-12WE | FTCP-16WE | FTCP-24WE | FTCP-06WE FTCP-12WE | FTCP-08WE FTCP-16WE | FTCP-06WE FTCP-16WE |

- NOTE 1: The flange comes with bolts and an O-ring.
- NOTE 2: Bolts of strength category 12.9 according to JIS B1176 are used.
- NOTE 3: The applicable standard for the O-ring is JIS B2401.

EXTERNAL DIMENSIONS



DIMENSION TABLE

| Dimension \ Model | A | B | C | Max. Speed (min ⁻¹) | Mass (kg) | |
|----------------------|-------|-------|-------|---------------------------------|-----------|--------|
| | | | | | F type | L type |
| TCP22-*5-5-MR1-A | 68 | 58 | 156 | 3,000 | 4.4 | 6.5 |
| TCP22-*5-6.3-MR1-A | 70.5 | | 158.5 | | 4.5 | 6.6 |
| TCP22-*5-8-MR1-A | 74 | | 162 | | 4.6 | 6.7 |
| TCP22-*5-10-MR1-A | 78 | | 166 | | 4.8 | 6.9 |
| TCP22-*6.3-6.3-MR1-A | 70.5 | 60.5 | 161 | | 4.6 | 6.7 |
| TCP22-*6.3-8-MR1-A | 74 | | 164.5 | | 4.7 | 6.8 |
| TCP22-*6.3-10-MR1-A | 78 | | 168.5 | | 4.9 | 7 |
| TCP22-*8-8-MR1-A | 74 | 64 | 168 | | 4.8 | 6.9 |
| TCP22-*8-10-MR1-A | 78 | | 172 | | 5 | 7.1 |
| TCP22-*10-10-MR1-A | 78 | 68 | 176 | | 5.2 | 7.3 |
| TCP33-*12.5-12.5-MR1 | 88 | 76 | 197.5 | 3,000 | 8.7 | 13.2 |
| TCP33-*12.5-16-MR1 | 91.5 | | 201 | | 9 | 13.5 |
| TCP33-*12.5-20-MR1 | 96 | | 205.5 | 2,800 | 9.3 | 13.8 |
| TCP33-*12.5-25-MR1 | 101 | | 210.5 | 2,500 | 9.7 | 14.2 |
| TCP33-*16-16-MR1 | 91.5 | 79.5 | 204.5 | 3,000 | 9.3 | 13.8 |
| TCP33-*16-20-MR1 | 96 | | 209 | 2,800 | 9.6 | 14.1 |
| TCP33-*16-25-MR1 | 101 | | 214 | 2,500 | 10 | 14.5 |
| TCP33-*20-20-MR1 | 96 | 84 | 213.5 | 2,800 | 9.9 | 14.4 |
| TCP33-*20-25-MR1 | 101 | | 218.5 | 2,500 | 10.3 | 14.8 |
| TCP33-*25-25-MR1 | | 89 | 223.5 | | 10.7 | 15.2 |
| TCP44-*31.5-31.5-MR1 | 116 | 95 | 253 | 2,800 | 20.7 | 28.1 |
| TCP44-*31.5-40-MR1 | 121.5 | | 258.5 | 2,500 | 21.5 | 28.9 |
| TCP44-*31.5-50-MR1 | 127 | | 264 | 2,100 | 22.3 | 29.7 |
| TCP44-*40-40-MR1 | 121.5 | | 100.5 | 264 | 2,500 | 22.3 |
| TCP44-*40-50-MR1 | 127 | 269.5 | | 2,100 | 23.1 | 30.5 |
| TCP44-*50-50-MR1 | 127 | 106 | 275 | 2,100 | 23.9 | 31.4 |
| TCP55-*63-63-MR1-A | 139 | 116 | 309 | 2,200 | 41.9 | 58.9 |
| TCP55-*63-80-MR1-A | 145 | | 315 | | 43.6 | 60.6 |
| TCP55-*63-100-MR1-A | 152 | | 322 | 2,000 | 45.3 | 62.3 |
| TCP55-*63-125-MR1-A | 162 | | 332 | 1,800 | 47.5 | 64.5 |
| TCP55-*80-80-MR1-A | 145 | 122 | 321 | 2,200 | 45.3 | 62.3 |
| TCP55-*80-100-MR1-A | 152 | | 328 | 2,000 | 47 | 64 |
| TCP55-*80-125-MR1-A | 162 | | 338 | 1,800 | 49.2 | 66.2 |
| TCP55-*100-100-MR1-A | 152 | | 129 | 335 | 2,000 | 48.7 |
| TCP55-*100-125-MR1-A | 162 | 345 | | 1,800 | 50.9 | 67.9 |
| TCP55-*125-125-MR1-A | | 139 | | | 355 | 53.1 |

COMMON DIMENSIONS

| Model \ Dimension | TCP22 | TCP33 | TCP44 | TCP55 |
|-------------------|--|--|--|--|
| D | 44.5 | 61.5 | 86 | 94 |
| E | 37 | 53.5 | 76 | 82 |
| F | 35.5 | 49.5 | 73 | 80 |
| G | 30 | 40 | 61 | 61 |
| H | 2 | 3.5 | 5 | 8 |
| K | 19.05 ⁰ _{-0.021} | 24 ^{+0.009} _{-0.004} | 32 ^{+0.011} _{-0.005} | 38 ^{+0.011} _{-0.005} |
| L | 21.25 | 27 | 35 | 41 |
| M | 65 | 75 | 90 | 115 |
| N | 125 | 162 | 204.5 | 258.2 |
| P | 69.8 | 92.1 | 109.5 | 139.7 |
| R | 15 | 20 | 20 | 26 |
| S | 29.5 | 39.5 | 64 | 68 |
| T | 28.5 | 35 | 40 | 45 |
| U | 50.8 | 50.8 | 76.2 | 139.7 |
| V | 96 | 110 | 150 | 210 |
| W | 129 | 172 | 213 | 272 |
| Y | 4.76 ^{+0.024} _{-0.012} | 8 ⁰ _{-0.036} | 10 ⁰ _{-0.036} | 10 ⁰ _{-0.036} |
| Z | 10 | 8 | 8 | 0 |
| a | 11 | 11 | 18 | 20 |
| d | 127 | 146 | 235 | 295.3 |
| e | 155 | 176 | 276 | 338 |
| f | 8 | 10 | 0 | 15 (downward) |
| g | 14.5 | 18.5 | 20 | 34 |
| i | 125 | 168 | 205 | 268 |
| k | 106 | 146 | 181 | 229 |
| m | 106 | 136 | 186 | 233 |
| n | 11 | 14 | 18 | 22 |
| q | 82.55 | 101.6 | 126.95 | 152.35 |
| x | 43.5 | 57.5 | 77.5 | 100 |
| y | 46.5 | 62.5 | 94 | 117 |

PIPING FLANGE DIMENSION TABLE

| Model \ Dimension | FTCP-04** | FTCP-06** | FTCP-08** | FTCP-12** | FTCP-16** | FTCP-24** |
|-------------------|---------------|---------------|--------------|----------------|--------------|--------------|
| A | 38 | 46 | 46 | 64 | 76 | 106 |
| B | 54 | 65 | 70 | 95 | 110.8 | 135 |
| C | 9 | 11 | 11 | 13 | 13 | 18 |
| D | 14(21.7) | 17.5(27.2) | 17.5(34) | 20(48.6) | 20(60.5) | 26(89.1) |
| E | 18(12.7) | 23.5(19) | 29.5(25) | 43.5(38) | 55.5(51) | 83.5(76) |
| F | 21(20) | 22(21) | 22(21) | 24(23) | 27(25) | 32(25) |
| G | 25(33) | 27(36) | 27(36) | 30(40) | 33(42) | 39(47) |
| H | $\frac{1}{2}$ | $\frac{3}{4}$ | 1 | $1\frac{1}{2}$ | 2 | 3 |
| X | 17.5 | 22.2 | 26.2 | 35.7 | 42.9 | 61.9 |
| Y | 38.1 | 47.6 | 52.4 | 69.8 | 77.8 | 106.4 |
| Bolt | M8 × 35 | M10 × 40 | M10 × 40 | M12 × 45 | M12 × 50 | M16 × 60 |
| O-ring | 1BG25(1BG25) | 1BG30(1BG25) | 1BG35(1BG35) | 1BG50(1BG45) | 1BG63(1BG58) | 1BG90(1BG85) |

NOTE 1: The dimensions in parentheses are those of the welding type flange FTCP-***WE.

NOTE 2: The flange comes with bolts and an O-ring.

NOTE 3: Bolts of strength category 12.9 according to JIS B1176 are used.

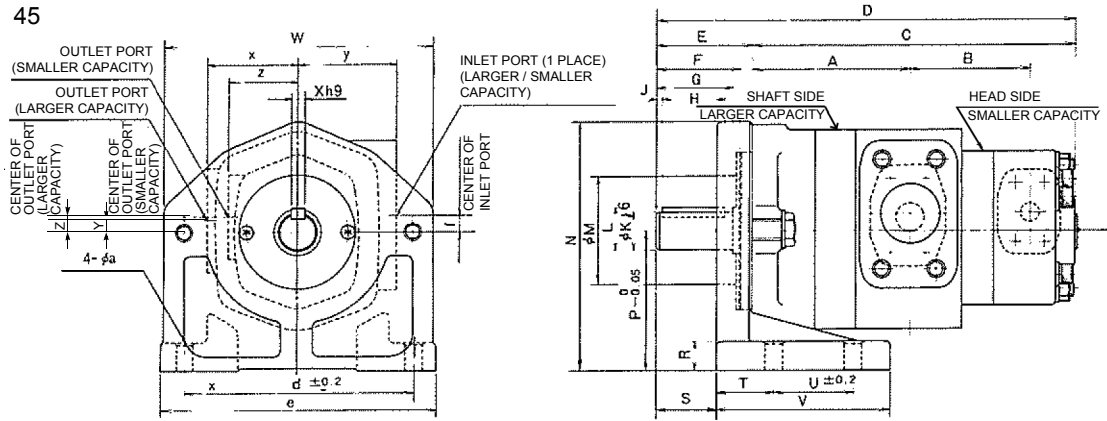
NOTE 4: The applicable standard for the O-ring is JIS B2401.

EXTERNAL DIMENSIONS

23

● TCP 34-L*-*-MR1-*

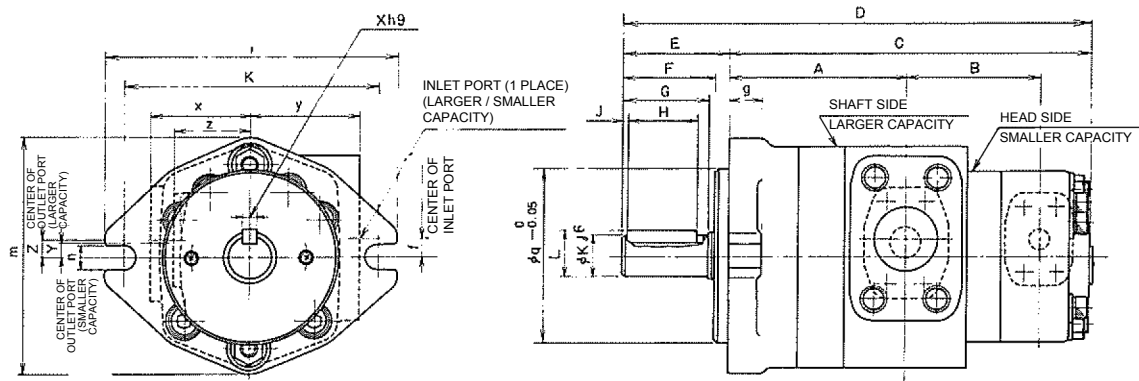
45



23

● TCP 34-F*-*-MR1-*

45



DIMENSION TABLE

| Model \ Dimension | A | B | C | D | Max. Speed (min ⁻¹) | Mass (kg) | |
|-----------------------|-------|-------|-------|-------|---------------------------------|-----------|--------|
| | | | | | | F type | L type |
| TCP23-*5-12.5-MR1 | 88 | 67 | 183 | 244.5 | 3,000 | 7.5 | 12 |
| TCP23-*5-16-MR1 | 91.5 | | 186.5 | 248 | | 7.8 | 12.3 |
| TCP23-*5-20-MR1 | 96 | | 191 | 252.5 | 2,800 | 8.1 | 12.6 |
| TCP23-*5-25-MR1 | 101 | | 196 | 257.5 | 2,500 | 8.5 | 13 |
| TCP23-*6.3-12.5-MR1 | 88 | 69.5 | 185.5 | 247 | 3,000 | 7.6 | 12.1 |
| TCP23-*6.3-16-MR1 | 91.5 | | 189 | 250.5 | | 7.9 | 12.4 |
| TCP23-*6.3-20-MR1 | 96 | | 193.5 | 255 | 2,800 | 8.2 | 12.7 |
| TCP23-*6.3-25-MR1 | 101 | | 198.5 | 260 | 2,500 | 8.6 | 13.1 |
| TCP23-*8-12.5-MR1 | 88 | 73 | 189 | 250.5 | 3,000 | 7.7 | 12.2 |
| TCP23-*8-16-MR1 | 91.5 | | 192.5 | 254 | | 8 | 12.5 |
| TCP23-*8-20-MR1 | 96 | | 197 | 258.5 | 2,800 | 8.3 | 12.8 |
| TCP23-*8-25-MR1 | 101 | | 202 | 263.5 | 2,500 | 8.7 | 13.2 |
| TCP23-*10-12.5-MR1 | 88 | 77 | 193 | 254.5 | 3,000 | 7.9 | 12.4 |
| TCP23-*10-16-MR1 | 91.5 | | 196.5 | 258 | | 8.2 | 12.7 |
| TCP23-*10-20-MR1 | 96 | | 201 | 262.5 | 2,800 | 8.5 | 13 |
| TCP23-*10-25-MR1 | 101 | | 206 | 267.5 | 2,500 | 8.9 | 13.4 |
| TCP34-*12.5-31.5-MR1 | 116 | 82 | 231.5 | 317.5 | 2,800 | 16.3 | 23.7 |
| TCP34-*12.5-40-MR1 | 121.5 | | 237 | 323 | 2,500 | 17.1 | 24.5 |
| TCP34-*12.5-50-MR1 | 127 | | 242.5 | 328.5 | 2,100 | 17.9 | 25.3 |
| TCP34-*16-31.5-MR1 | 116 | 85.5 | 235 | 321 | 2,800 | 16.6 | 24 |
| TCP34-*16-40-MR1 | 121.5 | | 240.5 | 326.5 | 2,500 | 17.4 | 24.8 |
| TCP34-*16-50-MR1 | 127 | | 246 | 332 | 2,100 | 18.2 | 25.6 |
| TCP34-*20-31.5-MR1 | 116 | 90 | 239.5 | 325.5 | 2,800 | 16.9 | 24.3 |
| TCP34-*20-40-MR1 | 121.5 | | 245 | 331 | 2,500 | 17.7 | 25.1 |
| TCP34-*20-50-MR1 | 127 | | 250.5 | 336.5 | 2,100 | 18.5 | 25.9 |
| TCP34-*25-31.5-MR1 | 116 | 95 | 244.5 | 330.5 | 2,800 | 17.3 | 24.7 |
| TCP34-*25-40-MR1 | 121.5 | | 250 | 336 | 2,500 | 18.1 | 25.5 |
| TCP34-*25-50-MR1 | 127 | | 255.5 | 341.5 | 2,100 | 18.9 | 26.3 |
| TCP45-*31.5-63-MR1-A | 139 | 109 | 289 | 383 | 2,200 | 34.6 | 51.6 |
| TCP45-*31.5-80-MR1-A | 145 | | 295 | 389 | | 36.3 | 53.3 |
| TCP45-*31.5-100-MR1-A | 152 | | 302 | 396 | 2,000 | 38 | 55 |
| TCP45-*31.5-125-MR1-A | 162 | | 312 | 406 | 1,800 | 40.2 | 57.2 |
| TCP45-*40-63-MR1-A | 139 | 114.5 | 294.5 | 388.5 | 2,200 | 35.4 | 52.4 |
| TCP45-*40-80-MR1-A | 145 | | 300.5 | 394.5 | | 37.1 | 54.1 |
| TCP45-*40-100-MR1-A | 152 | | 307.5 | 401.5 | 2,000 | 38.8 | 55.8 |
| TCP45-*40-125-MR1-A | 162 | | 317.5 | 411.5 | 1,800 | 41 | 58 |
| TCP45-*50-63-MR1-A | 139 | 120 | 300 | 394 | 2,200 | 36.2 | 53.2 |
| TCP45-*50-80-MR1-A | 145 | | 306 | 400 | | 37.9 | 54.9 |
| TCP45-*50-100-MR1-A | 152 | | 313 | 407 | 2,000 | 39.6 | 56.6 |
| TCP45-*50-125-MR1-A | 162 | | 323 | 417 | 1,800 | 41.8 | 58.8 |

NOTE: For the flange dimensions refer to page 33.

COMMON DIMENSIONS

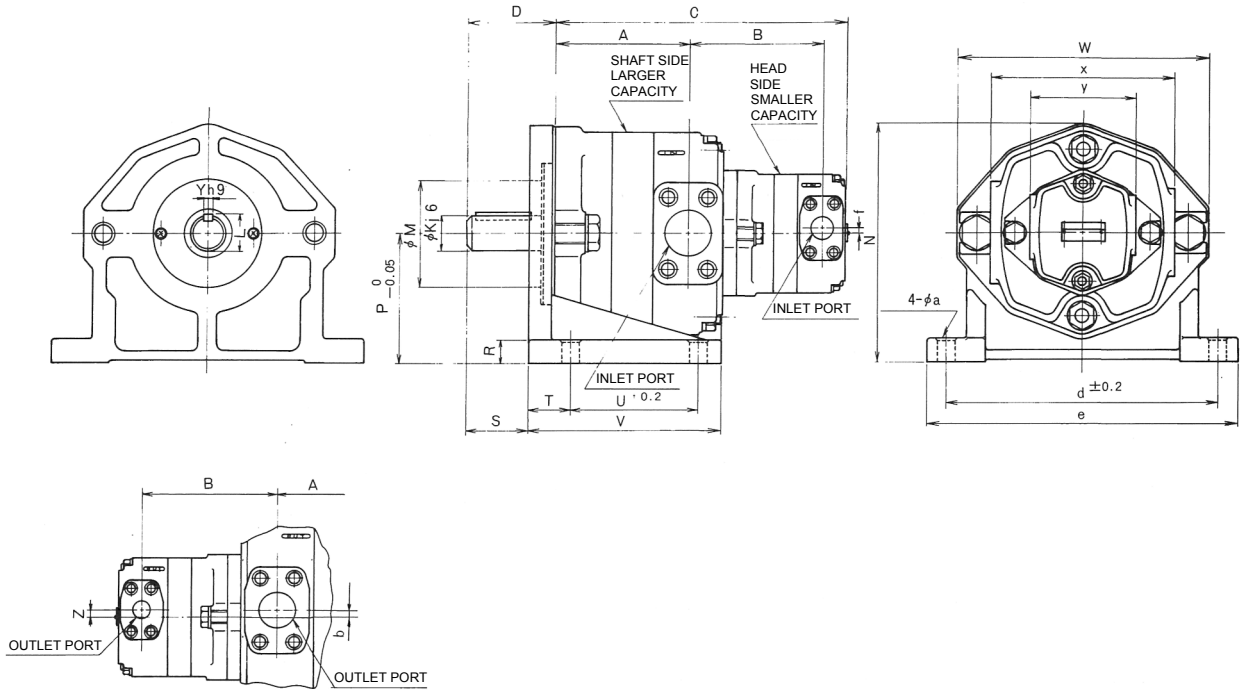
| Model \ Dimension | TCP23 | TCP34 | TCP45 |
|-------------------|-------|--------|---------------|
| E | 61.5 | 86 | 94 |
| F | 53.5 | 76 | 82 |
| G | 49.5 | 73 | 80 |
| H | 40 | 61 | 61 |
| J | 3.5 | 5 | 8 |
| K | 24 | 32 | 38 |
| L | 27 | 35 | 41 |
| M | 75 | 90 | 115 |
| N | 162 | 204.5 | 258.2 |
| P | 92.1 | 109.5 | 139.7 |
| R | 20 | 20 | 26 |
| S | 39.5 | 64 | 68 |
| T | 35 | 40 | 45 |
| U | 50.8 | 76.2 | 139.7 |
| V | 110 | 150 | 210 |
| W | 172 | 213 | 272 |
| X | 8 | 10 | 10 |
| Y | 8 | 8 | 0 |
| Z | 10 | 8 | 8 |
| a | 11 | 18 | 20 |
| d | 146 | 235 | 295.3 |
| e | 176 | 276 | 338 |
| f | 10 | 0 | 15 (downward) |
| g | 18.5 | 20 | 34 |
| i | 168 | 205 | 268 |
| k | 146 | 181 | 229 |
| m | 136 | 186 | 233 |
| n | 14 | 18 | 22 |
| q | 101.6 | 126.95 | 152.35 |
| x | 57.5 | 77.5 | 100 |
| y | 62.5 | 94 | 117 |
| z | 43.5 | 57.5 | 77.5 |

EXTERNAL DIMENSIONS

24

● TCP 35-L*--MR1*

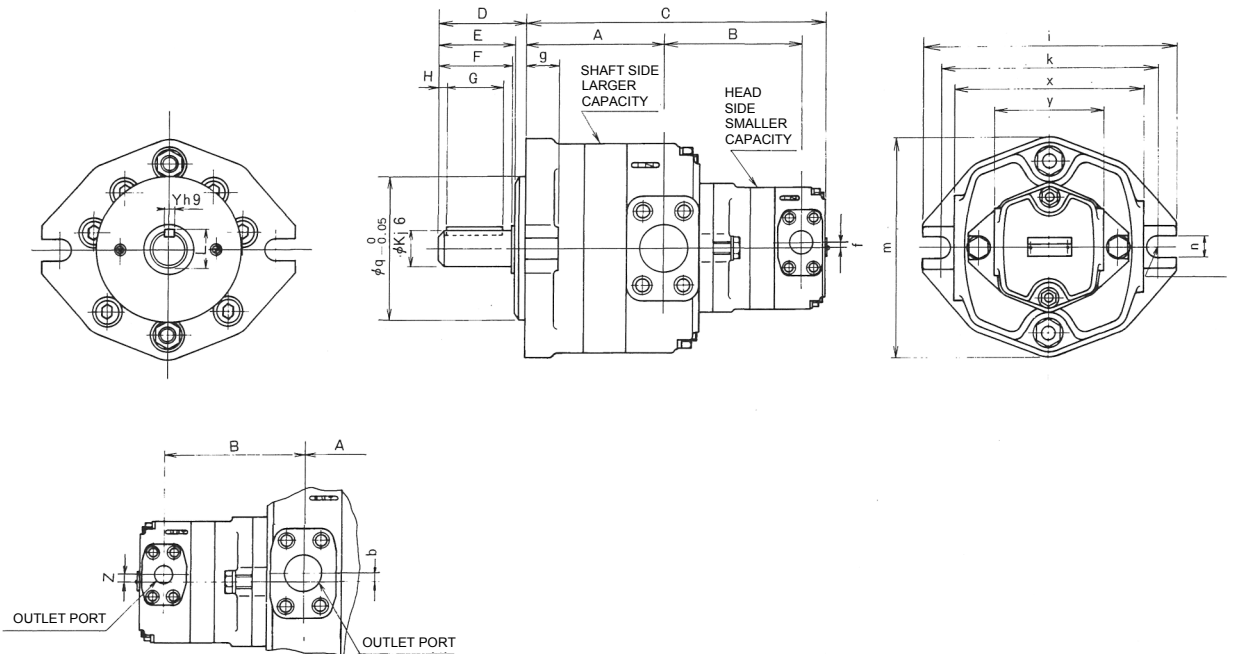
25



24

● TCP 35-F*--MR1*

25



DIMENSION TABLE

| Model \ Dimension | A | B | C | Max. Speed (min ⁻¹) | Mass (kg) | |
|-----------------------|-------|-------|-------|------------------------------------|-----------|--------|
| | | | | | F type | L type |
| TCP24-*5-31.5-MR1-A | 109 | 116 | 246 | 3,000 | 15.7 | 23.1 |
| TCP24-*5-40-MR1-A | 114.5 | | 251.5 | 2,800 | 16.5 | 23.9 |
| TCP24-*5-50-MR1-A | 120 | | 257 | 2,500 | 17.3 | 24.7 |
| TCP24-*6.3-31.5-MR1-A | 109 | 118.5 | 248.5 | 3,000 | 15.8 | 23.2 |
| TCP24-*6.3-40-MR1-A | 114.5 | | 254 | 2,800 | 16.6 | 24.0 |
| TCP24-*6.3-50-MR1-A | 120 | | 259.5 | 2,500 | 17.4 | 24.8 |
| TCP24-*8-31.5-MR1-A | 109 | 122 | 252 | 3,000 | 15.9 | 23.3 |
| TCP24-*8-40-MR1-A | 114.5 | | 257.5 | 2,800 | 16.7 | 24.1 |
| TCP24-*8-50-MR1-A | 120 | | 263 | 2,500 | 17.5 | 24.9 |
| TCP24-*10-31.5-MR1-A | 109 | 126 | 256 | 3,000 | 16.1 | 23.5 |
| TCP24-*10-40-MR1-A | 114.5 | | 261.5 | 2,800 | 16.9 | 24.3 |
| TCP24-*10-50-MR1-A | 120 | | 267 | 2,500 | 17.7 | 25.1 |
| TCP35-*12.5-63-MR1-A | 123 | 138 | 286 | 2,400 | 29.1 | 46.1 |
| TCP35-*12.5-80-MR1-A | 129 | | 292 | | 30.8 | 47.8 |
| TCP35-*12.5-100-MR1-A | 136 | | 299 | 2,100 | 32.5 | 49.5 |
| TCP35-*12.5-125-MR1-A | 146 | 141.5 | 309 | 1,800 | 34.7 | 51.7 |
| TCP35-*16-63-MR1-A | 123 | | 289.5 | 2,400 | 29.4 | 46.4 |
| TCP35-*16-80-MR1-A | 129 | | 295.5 | | 31.1 | 48.1 |
| TCP35-*16-100-MR1-A | 136 | | 302.5 | 2,100 | 32.8 | 49.8 |
| TCP35-*16-125-MR1-A | 146 | 146 | 312.5 | 1,800 | 35.0 | 52.0 |
| TCP35-*20-63-MR1-A | 123 | | 294 | 2,400 | 29.7 | 46.7 |
| TCP35-*20-80-MR1-A | 129 | | 300 | | 31.4 | 48.4 |
| TCP35-*20-100-MR1-A | 136 | | 307 | 2,100 | 33.1 | 50.1 |
| TCP35-*20-125-MR1-A | 146 | 151 | 317 | 1,800 | 35.3 | 52.3 |
| TCP35-*25-63-MR1-A | 123 | | 299 | 2,400 | 30.1 | 47.1 |
| TCP35-*25-80-MR1-A | 129 | | 305 | | 31.8 | 48.8 |
| TCP35-*25-100-MR1-A | 136 | | 312 | 2,100 | 33.5 | 50.5 |
| TCP35-*25-125-MR1-A | 146 | 118 | 322 | 1,800 | 35.7 | 52.7 |
| TCP25-*5-63-MR1-A | 123 | | 262 | 2,400 | 25.6 | 42.6 |
| TCP25-*5-80-MR1-A | 129 | | 268 | | 27.3 | 44.3 |
| TCP25-*5-100-MR1-A | 136 | | 275 | 2,100 | 29.0 | 46.0 |
| TCP25-*5-125-MR1-A | 146 | 120.5 | 285 | 1,800 | 31.2 | 48.2 |
| TCP25-*6.3-63-MR1-A | 123 | | 264.5 | 2,400 | 25.7 | 42.7 |
| TCP25-*6.3-80-MR1-A | 129 | | 270.5 | | 27.4 | 44.4 |
| TCP25-*6.3-100-MR1-A | 136 | | 277.5 | 2,100 | 29.1 | 46.1 |
| TCP25-*6.3-125-MR1-A | 146 | 124 | 287.5 | 1,800 | 31.3 | 48.3 |
| TCP25-*8-63-MR1-A | 123 | | 268 | 2,400 | 25.8 | 42.8 |
| TCP25-*8-80-MR1-A | 129 | | 274 | | 27.5 | 44.5 |
| TCP25-*8-100-MR1-A | 136 | | 281 | 2,100 | 29.2 | 46.2 |
| TCP25-*8-125-MR1-A | 146 | 128 | 291 | 1,800 | 31.4 | 48.4 |
| TCP25-*10-63-MR1-A | 123 | | 272 | 2,400 | 26.0 | 43.0 |
| TCP25-*10-80-MR1-A | 129 | | 278 | | 27.7 | 44.7 |
| TCP25-*10-100-MR1-A | 136 | | 285 | 2,100 | 29.4 | 46.4 |
| TCP25-*10-125-MR1-A | 146 | 128 | 295 | 1,800 | 31.6 | 48.6 |

NOTE: For the flange dimensions refer to page 33.

COMMON DIMENSIONS

| Model \ Dimension | TCP24 | TCP35 | TCP25 |
|-------------------|--------|--------|--------|
| D | 86 | 94 | 94 |
| E | 76 | 82 | 82 |
| F | 73 | 80 | 80 |
| G | 61 | 61 | 61 |
| H | 5 | 8 | 8 |
| K | 32 | 38 | 38 |
| L | 35 | 41 | 41 |
| M | 90 | 115 | 115 |
| N | 204.5 | 258.2 | 258.2 |
| P | 109.5 | 139.7 | 139.7 |
| R | 20 | 26 | 26 |
| S | 64 | 68 | 68 |
| T | 40 | 45 | 45 |
| U | 76.2 | 139.7 | 139.7 |
| V | 150 | 210 | 210 |
| W | 213 | 272 | 272 |
| Y | 10 | 10 | 10 |
| Z | 10 | 8 | 10 |
| a | 18 | 20 | 20 |
| b | 8 | 0 | 0 |
| d | 235 | 295.3 | 295.3 |
| e | 276 | 338 | 338 |
| f | 6 | 6 | 6 |
| g | 20 | 34 | 34 |
| i | 205 | 268 | 268 |
| k | 181 | 229 | 229 |
| m | 186 | 233 | 233 |
| n | 18 | 22 | 22 |
| q | 126.95 | 152.35 | 152.35 |
| x | 155 | 200 | 200 |
| y | 87 | 115 | 87 |